

Patient & Public Involvement Newsletter

Upcoming Events

- Oxford Trauma & Emergency Care Cluster Session, Patient & Public Involvement
Wednesday 28th
October 2020 (**PPI members funded for this meeting**)
- Oxford Trauma & Emergency Care Cluster session,
Wednesday 16th
December 2020
- The NIHR OTS Musculoskeletal Trauma Trials annual meeting,
20th January 2021

For more information regarding any of the above events, please email:

oxfordtrauma@ndorms.ox.ac.uk



Click the link above, or go to https://twitter.com/Oxford_Trauma to find more information on the Oxford Trauma and Emergency Care team.

General Updates

The Oxford Trauma and Emergency Care website is now live!

It has its very own PPI section. To view this page, please see link below:

<https://www.ndorms.ox.ac.uk/Oxford-Trauma-and-Emergency-Care/Patient-and-Public-Involvement>

Transforming into Oxford Trauma and Emergency Care

Trauma and Emergency Care are intricately linked. While not all patients suffering trauma arrive through the Emergency Department, the majority do. Many patients present themselves or are driven by friends or relatives, but more seriously injured patients are brought in my ambulance. The Emergency Department doctors and nurses provide many important aspects of trauma care, including first aid, resuscitation if required and pain relief. They also clean and dress wounds and apply plaster casts or splints to broken bones. These are all important aspects of trauma care and so research into the best treatments provided in the Emergency Department is important to patients. Of course, the doctors and nurses in the Emergency Department also provide immediate care for many other groups of patients including those having asthma or heart attacks, patients with abdominal pain and some patients with mental health issues.

In Oxford, the researchers in Trauma and Emergency Care have come together to pool their knowledge and skills to develop new research projects. These will cover all aspects Emergency Care for patients, as well as continuing research for those with traumatic injuries. We will also continue to support research projects from all around the UK. Our aim is to improve the treatment and speed the recovery of all patients suffering Trauma or needing Emergency Care. Patient and Public Involvement with this research is of course vital. We are very grateful for your advice and support. We hope that you will continue to guide our research through the Oxford Trauma and Emergency Care PPI Group.

**New logo for Oxford Trauma
and Emergency Care has
now been launched!**

We are now the third piece of the
NDORMS jigsaw.



Sending a pen with a questionnaire raises the rate of response

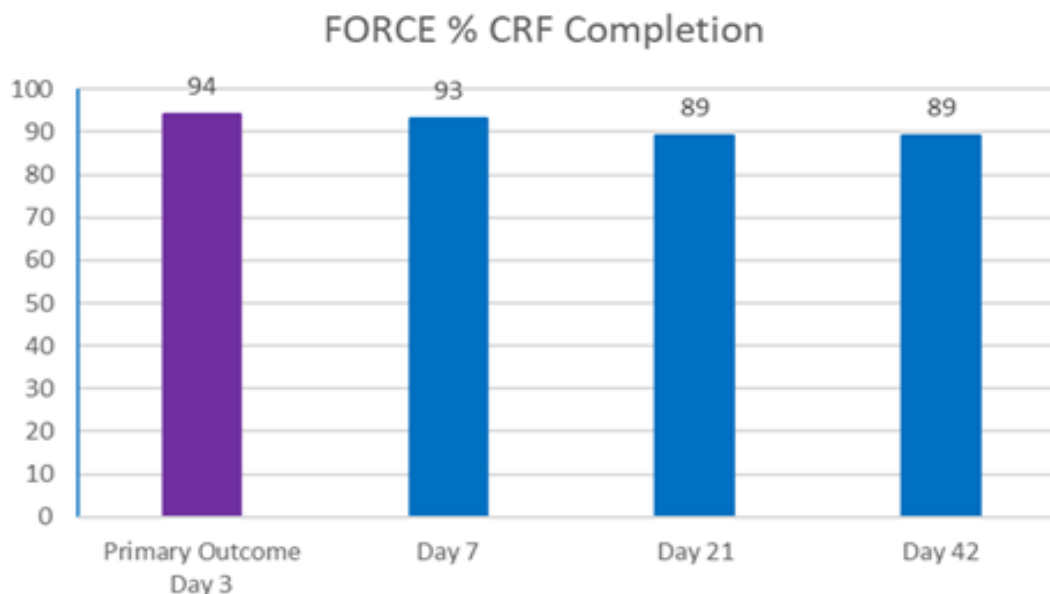
Research from York and Aberdeen shows that adding a pen to a postal questionnaire raises the overall response rate by about 2% and is cost-effective. The evidence was clearer with older than with younger participants. Five trials that tested the effect of adding a pen, with a total of 12,714 participants, were evaluated.

<https://www.trialforge.org/resource/evidence-pack-retention-adding-a-pen-ret3/>

Trial Updates



Despite Covid-19, Oxford Trauma's FORCE study remains open to recruitment. Some sites have had to temporarily suspend recruitment, due to capacity issues and staff re-deployment. There are now 867 participants recruited. We require around 50 more in the under 8 age group, to meet 90% power, by the end of June. See below the excellent follow up progress to date:



FAME is evaluating plaster cast without surgery as an alternative to surgical fixation for patients with unstable ankle fracture, aged under 60. Since December 2019 we have recruited 25 patients. When Covid-19 struck, many of our hospital research staff were diverted to Covid research and we suspended recruitment on 22nd March. We hope to reopen soon. Recruitment will continue until at least September 2021.